



CHATTERTON | REES



Francis House Eltringham Street, London, SW18 1GU

**£600,000**

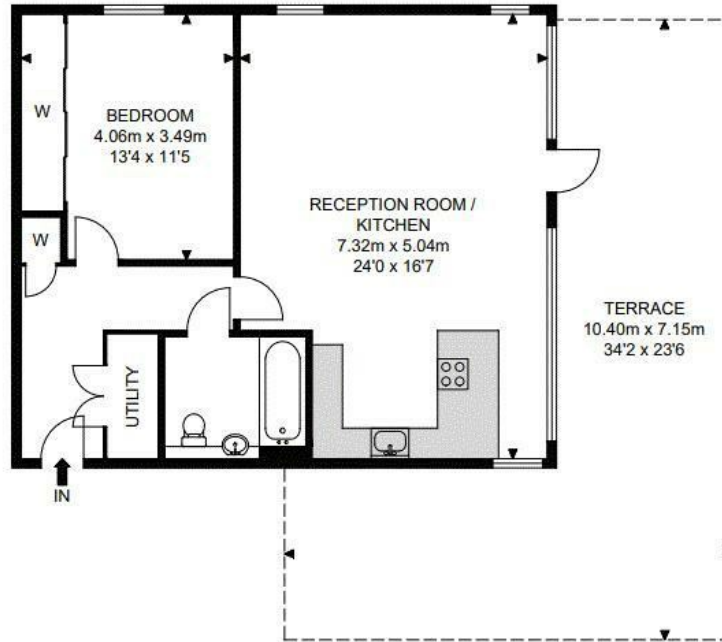
A beautifully presented, light and modern 1 bedroom, 1 bathroom penthouse on the top floor (with lift) in the popular Schoolyard development. The flat boasts a unique and rare wrap around terrace which is 453 sqft.

It is a perfect addition for entertaining. With unrestricted afternoon and evening sun and nobody overlooking you it is your very own private sanctuary. With almost 700sqft of lateral living space, this sleek modern flat is a must see.

Located off York Road and within short walking distance of the fashionable Old York Road with boutique coffee shops and local amenities. The development of Battersea Reach is nearby too providing riverside access.



# Francis House



4th Floor



APPROX. GROSS INTERNAL FLOOR AREA 680.27 SQ FT / 63.20 SQM  
 APPROX. GROSS EXTERNAL FLOOR AREA 453.16 SQ FT / 42.10 SQM

Whilst every attempt has been made to ensure the accuracy of the floor plan contained here, measurements of doors, windows, rooms and any other items are approximated and no responsibility is taken for any error, omission or mis-statement. This plan is for illustrative purposes only and should be used as such by any prospective purchaser. The service, system and appliances shown have not been tested and no guarantee as to their operability or efficiency can be given.

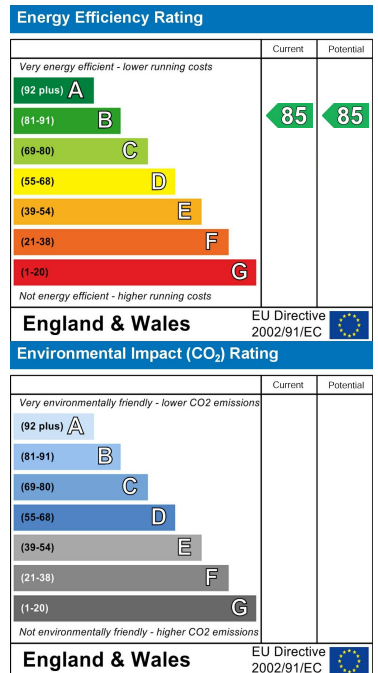
© SpacePhoto

Photography and Floor Plan

## Area Map



## Energy Efficiency Graph



These particulars, whilst believed to be accurate are set out as a general outline only for guidance and do not constitute any part of an offer or contract. Intending purchasers should not rely on them as statements of representation of fact, but must satisfy themselves by inspection or otherwise as to their accuracy. No person in this firm's employment has the authority to make or give any representation or warranty in respect of the property.